

Avian Adventures

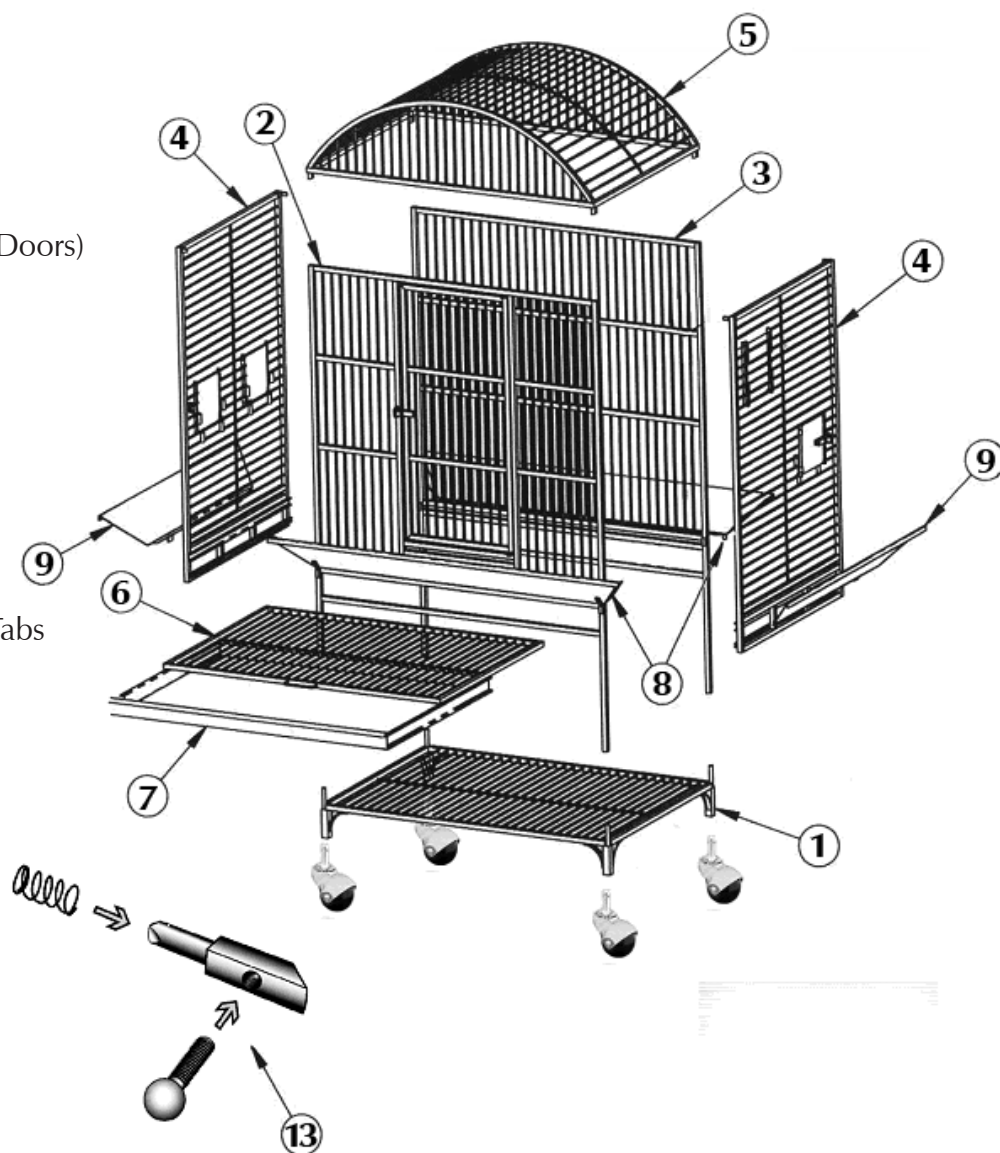
MidWest Homes For Pets
P.O. Box 1031
Muncie, Indiana 47308
800-428-8560
www.midwesthomes4pets.com

Assembly Instructions Niña Dometop

Unwrap and remove all parts from each box. Keep the box(es) and packing material until the cage is assembled. In case of return or exchange failure to return product in similar condition as received could result in limited reimbursement. Please save sales receipt as proof of purchase for warranty purposes. Check to ensure you have all the following parts: If you discover any parts are missing, immediately call our toll-free service helpline at 1-800-428-8560.

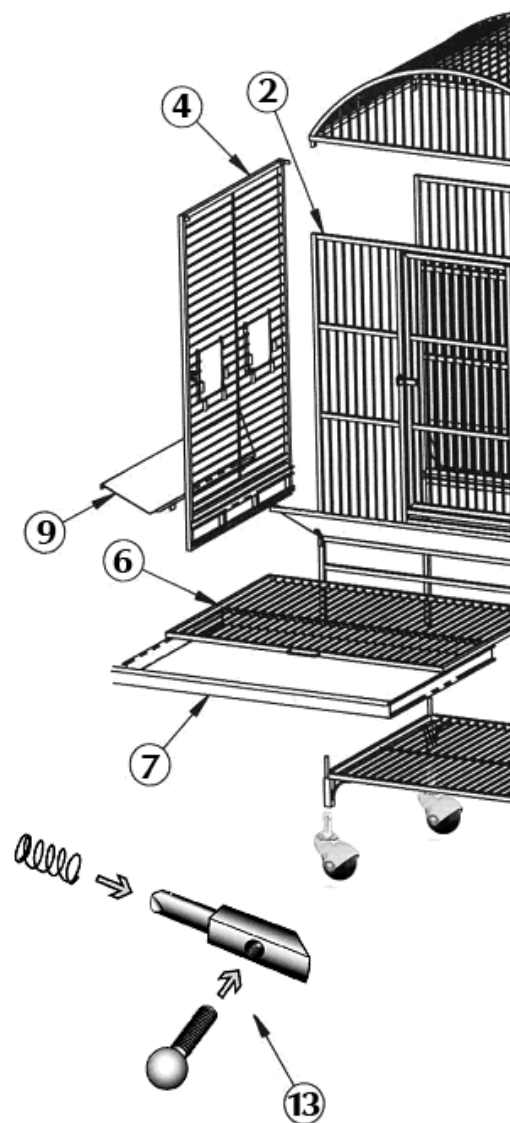
Parts Identification

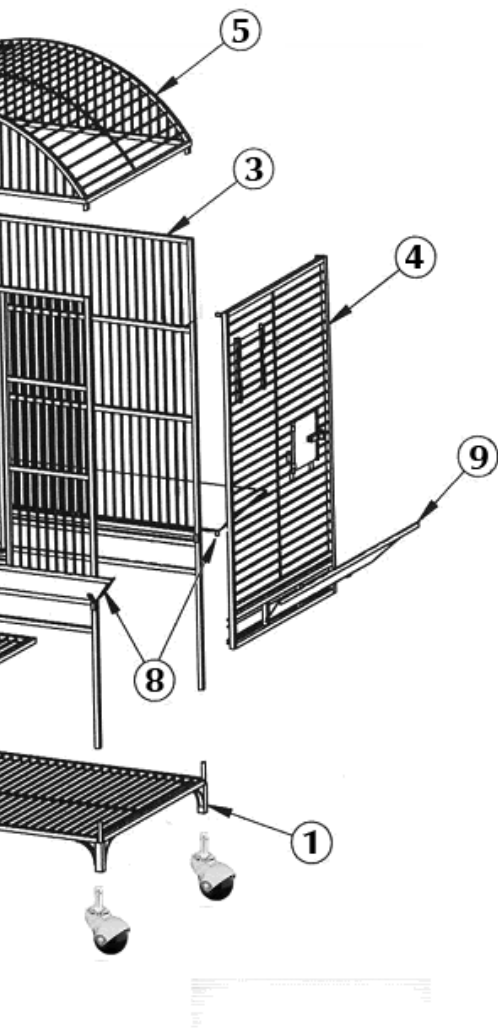
- ① Main Base & 4 Casters
- ② Front Panel (with door)
- ③ Back Panel
- ④ 2 Side Panels (with Food Doors)
- ⑤ Dome Top
- ⑥ Bottom Grate
- ⑦ Bottom Tray
- ⑧ 2 Seed Guards with Pegs
- ⑨ 2 Seed Guards with Flat Tabs
- ⑩ Perch
- ⑪ 3 Cups Holders
- ⑫ 3 Cup
- ⑬ 4 Latches



Assembly Instructions

- ① Place the MAIN BASE upside down and insert CASTERS into the legs (they can be installed using a rubber mallet on the metal stem, NOT on the rubber wheel).
- ② Turn the MAIN BASE over and insert the FRONT PANEL over the pegs in the front of the BASE.
- ③ Insert the BACK PANEL over the pegs in the back of the BASE.
- ④ Slide the SIDE PANELS over the metal sleeve at the bottom of the FRONT and BACK PANELS and push into the slots at the top.
- ⑤ Insert the pegs attached to the DOMETOP into the holes on the top of the PANELS to hold all PANELS together.
- ⑥ If desired, slide the GRATE into the track just below the front door.
- ⑦ The TRAY can go in two positions: 1) If you do not want to use the grate, you may slide the tray into the track just below the front door; or 2) Position the tray just above the front crossbar, and ensure the tray edge is inside the track on each side of the cage.





Locate the pair of SEED GUARDS with PEGS and insert the
pegs into the metal sleeves attached to the lower part of the
cage. ⑧

Then nest the SEED GUARDS with flat TABS into the ones
already on the cage. ⑨

Install the PERCH on the inside of the cage. The notches fit
over the cage bars on each side. ⑩

With the feed doors open, insert the CUP HOLDERS into the
tubes on the inside of the doors. ⑪

Insert a CUP into each of the CUP HOLDERS. ⑫

To install each LATCH, first remove the knob by unthreading it. ⑬
Ensure the spring is placed over the round end of latch. Insert
the assembly into the lock sleeve mounted onto the cage door
so that the round end protrudes through the opposite end.
Position the assembly so that the threaded hole is visible
through the front of the latch and screw the knob through the
lock sleeve into the threaded hole on the latch. Turn counter-
clockwise to loosen and open the door. When securing the
door, tighten in the opposite direction to go in to the "lock"
position.

LIMITED MANUFACTURERS WARRANTY

1. For one (1) year from the date of original purchase, MIDWEST Homes For Pets ("MidWest") warrants to the purchaser of this pet home that, should it prove defective by reason of improper workmanship and/or material, MidWest will repair or replace, at its option, any defective part of the pet home, without charge for the part or for shipping. Replacement parts are warranted for the remainder of the original period.
2. **THIS WARRANTY DOES NOT COVER** defects in the wire enclosure caused by any animal, any physical abuse to or misuse of the pet home, any damage caused by the original purchaser or any third party, or any defects arising or discovered more than one (1) year from the original retail purchase date.
3. **STEPS TO OBTAIN WARRANTY SERVICE:**
 - A. The purchaser must call MidWest's HELPLINE, 800-428-8560, to report the alleged defect to a customer service representative or obtain missing parts.
 - B. The customer service representative will determine if the defect is covered by this warranty, and if it is, will authorize and instruct the purchaser in how to obtain corrective action.
 - C. MidWest may require the purchaser to present the sales receipt or other proof of purchase prior to authorizing any return or replacement. No returns or replacements will be permitted without proper authorization. If a return or replacement is authorized, you may be requested to return the item to MidWest or to make the item available for pick-up by MidWest.
4. **ANY EXPRESS WARRANTY NOT PROVIDED IN THIS WARRANTY DOCUMENT, AND ANY REMEDY FOR BREACH OF CONTRACT THAT, BUT FOR THIS PROVISION, MIGHT ARISE BY IMPLICATION OR OPERATION OF LAW, IS HEREBY EXCLUDED AND DISCLAIMED. THE IMPLIED WARRANTIES OF MERCHANTABILITY AND OF FITNESS FOR ANY PARTICULAR PURPOSE ARE EXPRESSLY LIMITED TO A TERM OF ONE (1) YEAR. SOME STATES DO NOT ALLOW LIMITATIONS ON HOW LONG AN IMPLIED WARRANTY LASTS, SO THE ABOVE LIMITATIONS MAY NOT APPLY TO YOU.**
5. **UNDER NO CIRCUMSTANCES SHALL MidWest BE LIABLE TO PURCHASER OR ANY OTHER PERSON OR ANY SPECIAL, INCIDENTAL OR CONSEQUENTIAL DAMAGES, WHETHER ARISING OUT OF BREACH OF WARRANTY, BREACH OF CONTRACT OR OTHERWISE, SOME STATES DO NOT ALLOW THE EXCLUSION OR LIMITATIONS OF INCIDENTAL OR CONSEQUENTIAL DAMAGES, SO THE ABOVE LIMITATIONS OR EXCLUSION MAY NOT APPLY TO YOU.**
6. This warranty gives you specific legal rights, and you may also have other rights which vary from state to state.

