

Exercise Pens

Add-On Panels

800-428-8560
midwesthomes4pets.com
P.O. Box 1031
Muncie, Indiana 47308



Assembly Instructions for Model Number 550-24ADD, 550-30ADD, 550-36ADD, 550-42ADD, 550-48ADD

IMPORTANT INFORMATION

Remove collars, tags, and leads from pet before placing it in the pen to prevent possible entanglement. DO NOT leave young animals unsupervised for extended periods of time. MidWest's main concern is your pet's well-being. If your pet has never been kept in any enclosure, specific training may be necessary for your pet's safety. A pet, not specifically trained to be restricted, may attempt to escape from this enclosure, which could cause serious injury to your pet or this product. MidWest will not accept liability or warrant any loss due to improper use of this product by a pet that has not been properly trained.

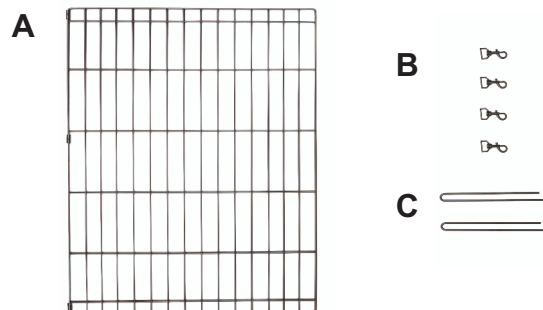
Unwrap and remove all parts from the box. Keep the box and packing material until the product is assembled. In case of return or exchange, failure to return product in similar condition as received could result in limited reimbursement. Please save sales receipt as proof of purchase for warranty purposes. Check to ensure you have all the parts below. If you discover any parts are missing, immediately call our toll-free service helpline at 1-800-428-8560 (Monday - Friday, 9 a.m. to 4 p.m. EST) or at info@midwesthomes4pets.com.

PARTS IDENTIFICATION

A. Exercise Pen Add-On Panels
2 connected panels

B. Snaps (4)

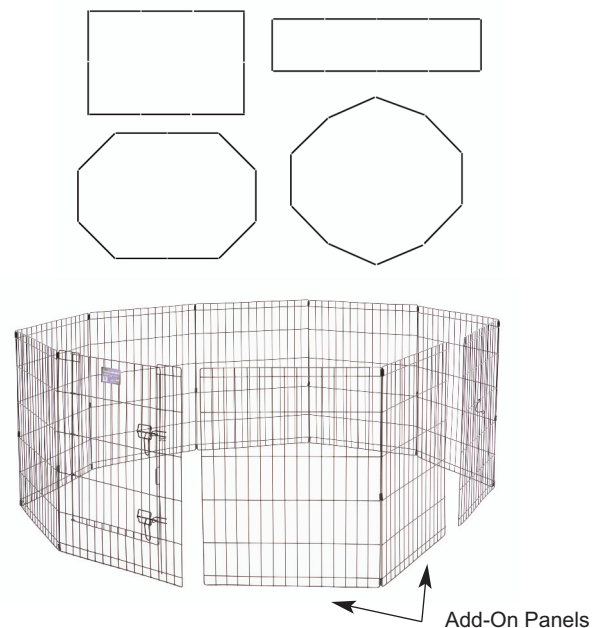
C. Ground Anchors (2)



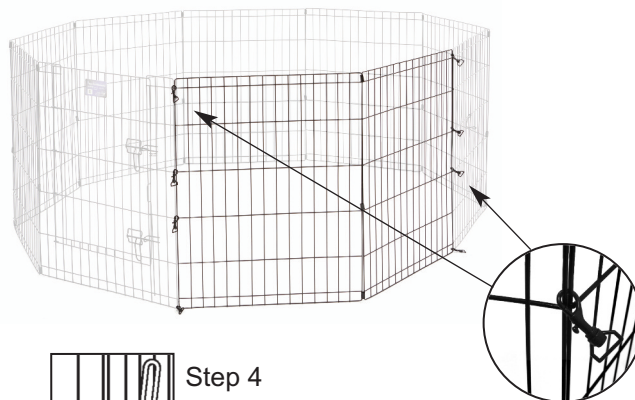
ASSEMBLY INSTRUCTIONS

1. Your Add-On Panels can be added to your Exercise Pen to create many different configurations. Decide what configuration you'd like to use and set up the pen.
Note: The pen can be moved and reconfigured after it has been assembled.

2. Align the Add-On Panels with the Exercise Pen in the desired location.



3. Using the four Snaps that came with your Exercise Pen and the four Snaps that came with your Add-On Panels, connect the Add-On Panels to the Exercise Pen on each side. For best results, place Snaps at top and bottom between the two closely spaced wires, and space the remaining two Snaps evenly along the middle wires.



4. For added safety when used outdoors, install a Ground Anchor at the intersection of each panel. (Note: Snaps and other details have been eliminated to more clearly illustrate the Ground Anchor.)



Step 4

TOLL-FREE SERVICE HELPLINE: If you have any problems or questions with the assembly of your new Exercise Pen Add-On Panels, call our Service Helpline at: 1-800-428-8560 between 9:00 a.m. and 4:00 p.m. (EST) Monday through Friday.

LIMITED MANUFACTURERS WARRANTY

1. For one (1) year from the date of original purchase, MIDWEST Homes For Pets ("MIDWEST") warrants to the purchaser of this exercise pen accessory that, should it prove defective by reason of improper workmanship and/or material, MIDWEST will repair or replace, at its option, any defective part of the exercise pen accessory, without charge for the part or for shipping. Replacement parts are warranted for the remainder of the original period.
2. **THIS WARRANTY DOES NOT COVER** defects in the exercise pen accessory caused by any animal, any physical abuse to or misuse of the exercise pen accessory, any damage caused by the original purchaser or any third party, or any defects arising or discovered more than one (1) year from the original retail purchase date.
3. **STEPS TO OBTAIN WARRANTY SERVICE:**
 - A. The purchaser must call MIDWEST's HELPLINE, 800-428-8560, to report the alleged defect to a customer service representative or obtain missing parts.
 - B. The customer service representative will determine if the defect is covered by this warranty, and if it is, will authorize and instruct the purchaser in how to obtain corrective action.
 - C. MIDWEST may require the purchaser to present the sales receipt or other proof of purchase prior to authorizing any return or replacement. No returns or replacements will be permitted without proper authorization. If a return or replacement is authorized, you may be requested to return the item to MIDWEST or to make the item available for pick-up by MIDWEST.
4. **ANY EXPRESS WARRANTY NOT PROVIDED IN THIS WARRANTY DOCUMENT, AND ANY REMEDY FOR BREACH OF CONTRACT THAT, BUT FOR THIS PROVISION, MIGHT ARISE BY IMPLICATION OR OPERATION OF LAW, IS HEREBY EXCLUDED AND DISCLAIMED. THE IMPLIED WARRANTIES OF MERCHANTABILITY AND OF FITNESS FOR ANY PARTICULAR PURPOSE ARE EXPRESSLY LIMITED TO A TERM OF ONE (1) YEAR. SOME STATES DO NOT ALLOW LIMITATIONS ON HOW LONG AN IMPLIED WARRANTY LASTS, SO THE ABOVE LIMITATIONS MAY NOT APPLY TO YOU.**
5. **UNDER NO CIRCUMSTANCES SHALL MIDWEST BE LIABLE TO PURCHASER OR ANY OTHER PERSON OR ANY SPECIAL, INCIDENTAL OR CONSEQUENTIAL DAMAGES, WHETHER ARISING OUT OF BREACH OF WARRANTY, BREACH OF CONTRACT OR OTHERWISE, SOME STATES DO NOT ALLOW THE EXCLUSION OR LIMITATIONS OF INCIDENTAL OR CONSEQUENTIAL DAMAGES, SO THE ABOVE LIMITATIONS OR EXCLUSION MAY NOT APPLY TO YOU.**
6. This warranty gives you specific legal rights, and you may also have other rights which vary from state to state.

