



800-428-8560
midwesthomes4pets.com
3142 S. Cowan Rd.
Muncie, Indiana 47302



Assembly Instructions for Model 171CL



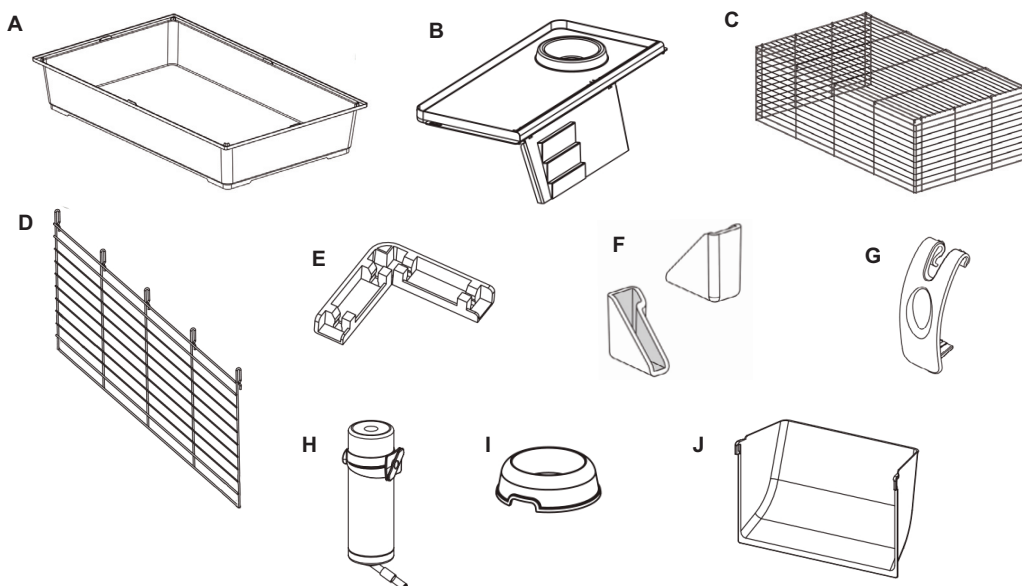
Assembly Videos and Instruction Manuals can be viewed at midwesthomes4pets.com.

IMPORTANT INFORMATION

Unwrap and remove all parts from the box. Keep the box and packing material until the product is assembled. In case of return or exchange, failure to return product in similar condition as received could result in limited reimbursement. Please save sales receipt as proof of purchase for warranty purposes. Check to ensure you have all the parts below. If you discover any parts are missing, immediately call our toll-free service helpline at 1-800-428-8560 (Monday - Friday 9 a.m. to 4 p.m. EST) or at info@midwesthomes4pets.com.

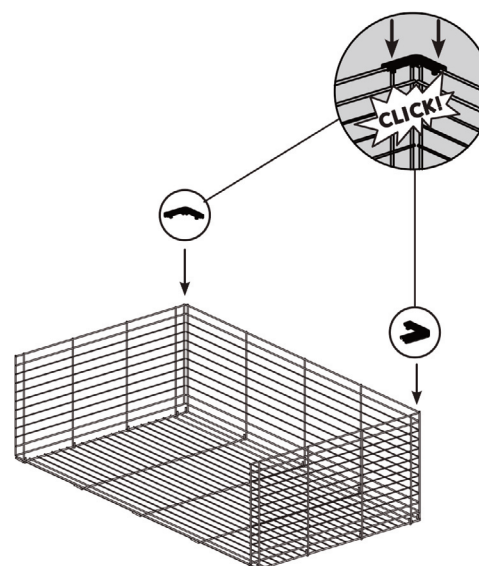
PARTS IDENTIFICATION

- A - Plastic Bottom
- B - Elevated Feeding Platform
- C - Wire Top with Sliding Door
- D - Side Door
- E - Corner Stabilizers - 2
- F - Corner Caps - 2
- G - Clips - 4
- H - Water Bottle
- I - Food Bowl
- J - Hay Feeder



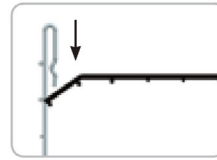
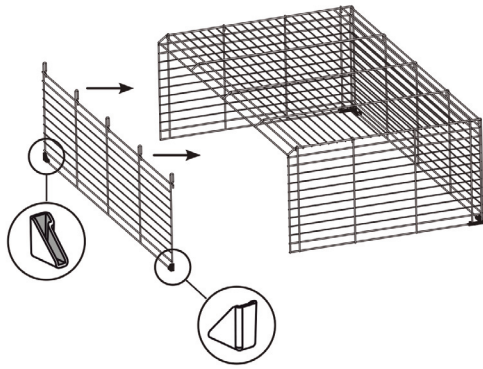
ASSEMBLY INSTRUCTIONS

1. Lay out the Wire Top (C) so the sliding door is on the floor. Bring the front, back, and sides together. Secure with two Corner Stabilizers (E) in the back, as shown.

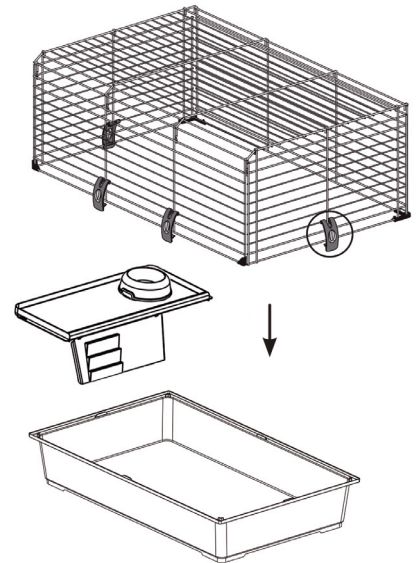


Pour des instructions en français, veuillez visiter : <https://www.midwesthomes4pets.com>
Para obtener instrucciones en español, por favor visite: <https://www.midwesthomes4pets.com>

- Place a Corner Cap (F) on each corner of the Side Door (D) as shown. Attach the Side Door to the Wire Top.

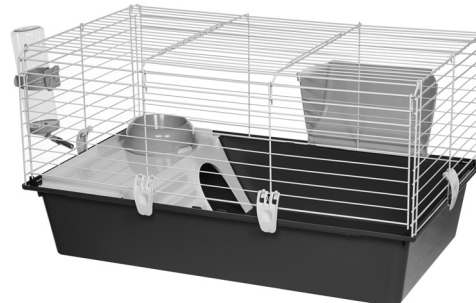


- Secure the four Clips (G) to the Wire Top. One should be placed on each short end of the Wire Top, and two should be placed on the Side Door. Place the Bowl (I) on the Elevated Feeding Tray (B) and place the tray in the Plastic Bottom. Finish with the Wire Top; be sure to secure the Wire Top to the Plastic Bottom using the Clips.



- Attach the Hay Feeder (J) and the Water Bottle (H) to the outside of the home.

- Your Critterville Cleo is now fully assembled and ready for use. Furnish with bedding, toys, and accessories as desired.



To clean your **Critterville Cleo** Guinea Pig Home, wipe with a damp cloth and mild, pet-safe cleaner. Allow to air dry. Do not expose to direct sunlight for extended periods of time.

TOLL-FREE SERVICE HELPLINE: If you have any problems or questions with the assembly of your **Critterville Cleo** Guinea Pig Home, call our Service Helpline at: 1-800-428-8560 between 9:00 a.m. and 4:00 p.m. (EST) Monday through Friday.

LIMITED MANUFACTURER'S WARRANTY

- For one (1) year from the date of original purchase, MIDWEST Homes For Pets ("MIDWEST") warrants to the purchaser of this pet home that, should it prove defective by reason of improper workmanship and/or material, MIDWEST will repair or replace, at its option, any defective part of the pet home, without charge for the part or for shipping. Replacement parts are warranted for the remainder of the original period.
- THIS WARRANTY DOES NOT COVER** defects in the home caused by any animal, any physical abuse to or misuse of the pet home, any damage caused by the original purchaser or any third party, or any defects arising or discovered more than one (1) year from the original retail purchase date.
- STEPS TO OBTAIN WARRANTY SERVICE:**
 - The purchaser must call MIDWEST's HELPLINE, 800-428-8560, to report the alleged defect to a customer service representative or obtain missing parts.
 - The customer service representative will determine if the defect is covered by this warranty and, if it is, will authorize and instruct the purchaser in how to obtain corrective action.
 - MIDWEST may require the purchaser to present the sales receipt or other proof of purchase prior to authorizing any return or replacement. No returns or replacements will be permitted without proper authorization. If a return or replacement is authorized, you may be requested to return the item to MIDWEST or to make the item available for pick-up by MIDWEST.
- ANY EXPRESS WARRANTY NOT PROVIDED IN THIS WARRANTY DOCUMENT, AND ANY REMEDY FOR BREACH OF CONTRACT THAT, BUT FOR THIS PROVISION, MIGHT ARISE BY IMPLICATION OR OPERATION OF LAW, IS HEREBY EXCLUDED AND DISCLAIMED. THE IMPLIED WARRANTIES OF MERCHANTABILITY AND OF FITNESS FOR ANY PARTICULAR PURPOSE ARE EXPRESSLY LIMITED TO A TERM OF ONE (1) YEAR. SOME STATES DO NOT ALLOW LIMITATIONS ON HOW LONG AN IMPLIED WARRANTY LASTS, SO THE ABOVE LIMITATIONS MAY NOT APPLY TO YOU.**
- UNDER NO CIRCUMSTANCES SHALL MIDWEST BE LIABLE TO PURCHASER OR ANY OTHER PERSON FOR ANY SPECIAL, INCIDENTAL OR CONSEQUENTIAL DAMAGES, WHETHER ARISING OUT OF BREACH OF WARRANTY, BREACH OF CONTRACT OR OTHERWISE, SOME STATES DO NOT ALLOW THE EXCLUSION OR LIMITATIONS OF INCIDENTAL OR CONSEQUENTIAL DAMAGES, SO THE ABOVE LIMITATIONS OR EXCLUSION MAY NOT APPLY TO YOU.**
- This warranty gives you specific legal rights, and you may also have other rights which vary from state to state.