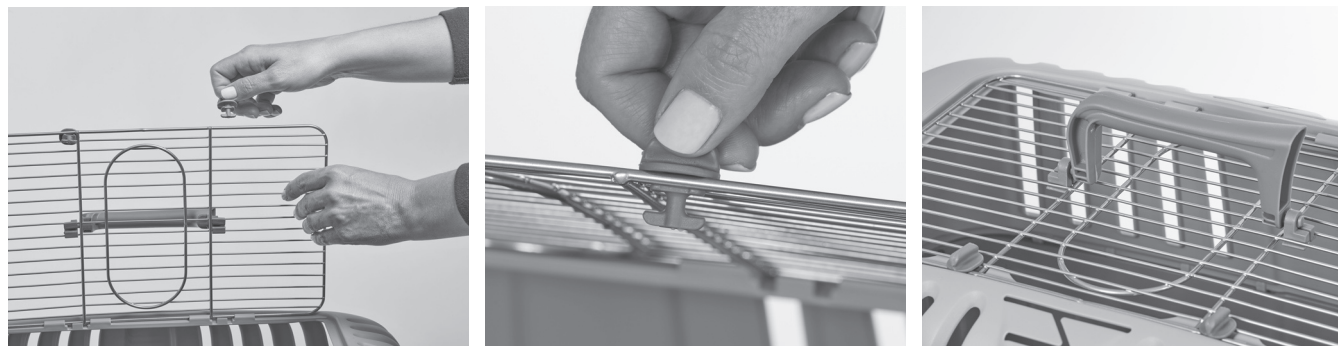
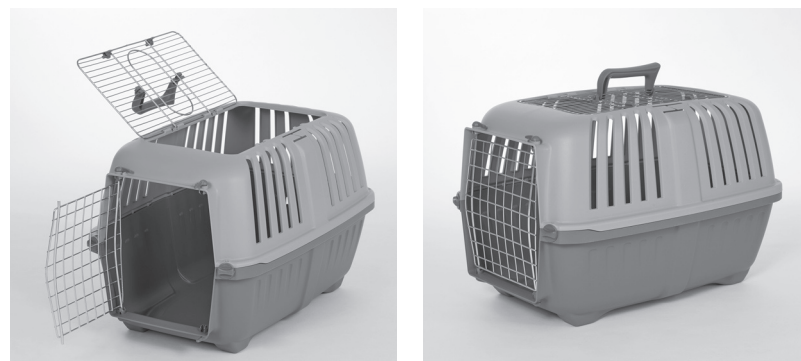


12. Attach the Top Door Latches. Insert each latch between the first two horizontal wires and just to the outside of the first two vertical wires as shown. When the Top Door is down, the latches will twist into a locked position to keep the door securely closed.



Your Spree Pet Carrier is now ready to use. Always be sure both doors are fully latched and secure when the carrier is in use. Do not use this carrier with pets weighing more than 25 lbs.



TOLL-FREE SERVICE HELPLINE: If you have any problems or questions with the assembly of your Spree Pet Carrier, call our Service Helpline at: 1-800-428-8560 between 9:00 a.m. and 4:00 p.m. (EST) Monday through Friday.

LIMITED MANUFACTURER'S WARRANTY

1. For one (1) year from the date of original purchase, MidWest Homes For Pets ("MIDWEST") warrants to the purchaser of this pet carrier that, should it prove defective by reason of improper workmanship and/or material, the manufacturer will repair or replace, at its option, any defective part of the pet carrier, without charge for the part or for shipping. Replacement parts are warranted for the remainder of the original period.
2. **THIS WARRANTY DOES NOT COVER** defects in the enclosure caused by any animal, any physical abuse to or misuse of the pet carrier, any damage caused by the original purchaser or any third party, or any defects arising or discovered more than one (1) year from the original retail purchase date.
3. **STEPS TO OBTAIN WARRANTY SERVICE:**
 - A. The purchaser must call the manufacturer's HELPLINE, 800-428-8560, to report the alleged defect to a customer service representative or obtain missing parts.
 - B. The customer service representative will determine if the defect is covered by this warranty, and if it is, will authorize and instruct the purchaser in how to obtain corrective action.
 - C. The manufacturer may require the purchaser to present the sales receipt or other proof of purchase prior to authorizing any return or replacement. No returns or replacements will be permitted without proper authorization. If a return or replacement is authorized, you may be requested to return the item to the manufacturer or to make the item available for pick-up by the manufacturer.
4. **ANY EXPRESS WARRANTY NOT PROVIDED IN THIS WARRANTY DOCUMENT, AND ANY REMEDY FOR BREACH OF CONTRACT THAT, BUT FOR THIS PROVISION, MIGHT ARISE BY IMPLICATION OR OPERATION OF LAW, IS HEREBY EXCLUDED AND DISCLAIMED. THE IMPLIED WARRANTIES OF MERCHANTABILITY AND OF FITNESS FOR ANY PARTICULAR PURPOSE ARE EXPRESSLY LIMITED TO A TERM OF ONE (1) YEAR. SOME STATES DO NOT ALLOW LIMITATIONS ON HOW LONG AN IMPLIED WARRANTY LASTS, SO THE ABOVE LIMITATIONS MAY NOT APPLY TO YOU.**
5. **UNDER NO CIRCUMSTANCES SHALL THE MANUFACTURER BE LIABLE TO PURCHASER OR ANY OTHER PERSON OR ANY SPECIAL, INCIDENTAL OR CONSEQUENTIAL DAMAGES, WHETHER ARISING OUT OF BREACH OF WARRANTY, BREACH OF CONTRACT OR OTHERWISE, SOME STATES DO NOT ALLOW THE EXCLUSION OR LIMITATIONS OF INCIDENTAL OR CONSEQUENTIAL DAMAGES, SO THE ABOVE LIMITATIONS OR EXCLUSION MAY NOT APPLY TO YOU.**
6. This warranty gives you specific legal rights, and you may also have other rights which vary from state to state.

For a Complete Listing of Products
Crates • Kennels • Pet Beds
Cat Furniture • Ex Pens • Accessories ...
 - Come Visit Our Website
www.midwesthomes4pets.com



Spree™ Pet Carriers

800-428-8560
midwesthomes4pets.com
 3142 S. Cowan Rd.
 Muncie, Indiana 47302



Assembly Instructions for 1424SPG-TD, 1424SPB-TD, 1424SPR-TD

IMPORTANT INFORMATION

Remove collar, tags, and leads from pet before placing it in the home to prevent possible entanglement. This carrier is intended for use by small pets weighing no more than 25 lbs.

Unwrap and remove all parts from the box. Keep the box and packing material until the product is assembled. In case of return or exchange, failure to return product in similar condition as received could result in limited reimbursement. Please save sales receipt as proof of purchase for warranty purposes. Check to ensure you have all the parts below. If you discover any parts are missing, immediately call our toll-free service helpline at 1-800-428-8560 (Monday - Friday 9 a.m. to 4 p.m. EST) or email customer service at info@midwesthomes4pets.com.

PARTS IDENTIFICATION

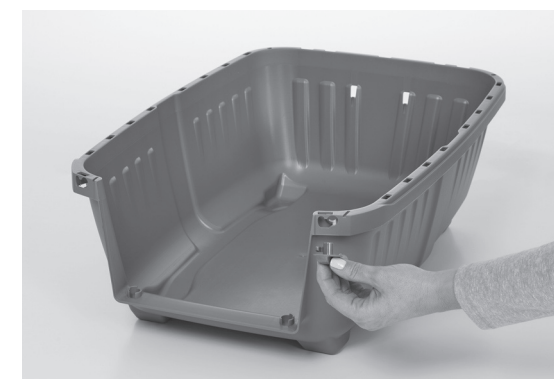
| | | | | |
|--------------------|----------------------|--------------|-----------------------|----------------|
| Plastic Bottom (1) | Plastic Top (1) | Knobs (2) | Front Door Hinges (4) | Front Door (1) |
| Top Handle (1) | Top Handle Clips (2) | Top Door (1) | Top Door Latches (2) | |

ASSEMBLY INSTRUCTIONS

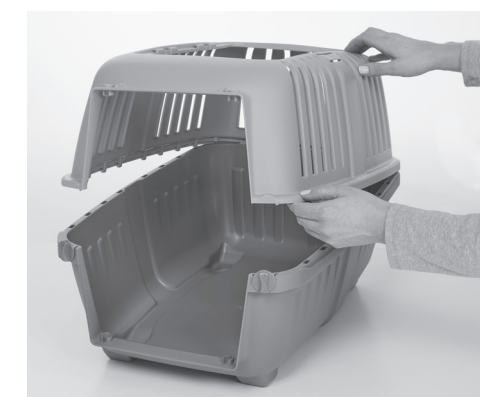
1. Twist the Knobs and Front Door Hinges to detach them from the plastic packaging. Lay out all pieces, along with the Top Handle, Top Handle Clips, and Top Door Latches.



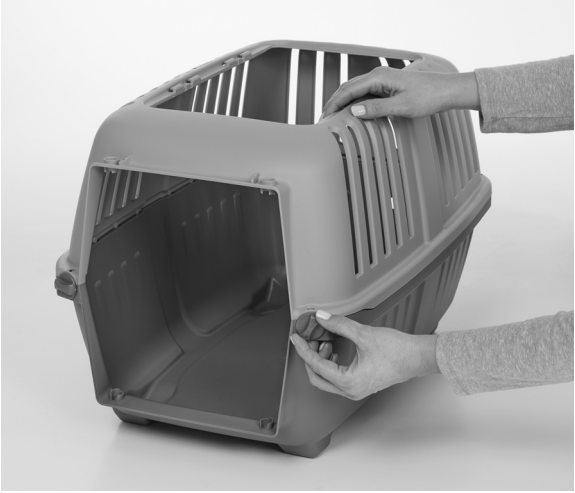
2. Attach the knobs to the front side of the plastic bottom. To insert, start with the "unlock" symbol at the bottom. When assembled, the knob will twist 90 degrees clockwise to lock and 90 degrees counter-clockwise to unlock.



3. Starting at the back of the carrier, place the Plastic Top on the Plastic Bottom, aligning the tabs on the top with the holes on the bottom around the carrier's perimeter. Slide the top slightly forward until it clicks into place on the plastic bottom.



- Turn the Knobs 90 degrees clockwise to lock the top and the bottom together.



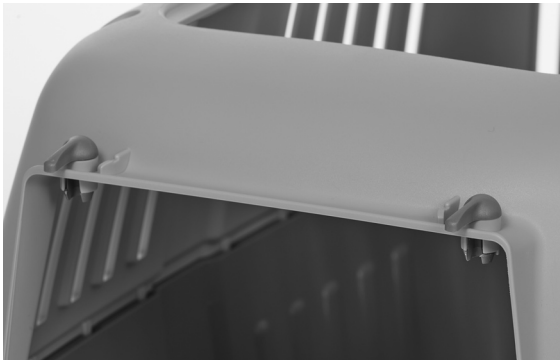
- Insert the four Front Door Hinges at the top and bottom of the carrier's opening.

NOTE: This step can also be completed at the beginning, before Step 2; either way is fine and will not affect assembly. Simply place the Front Door Hinges in the hinge holes and press down until they click into place.

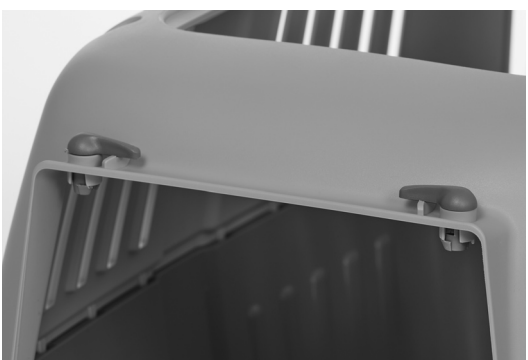


- The hinges allow the door to be inserted, removed, or opened left-to-right or right-to-left. Simply twist the hinges to the open and closed position as needed.

Open



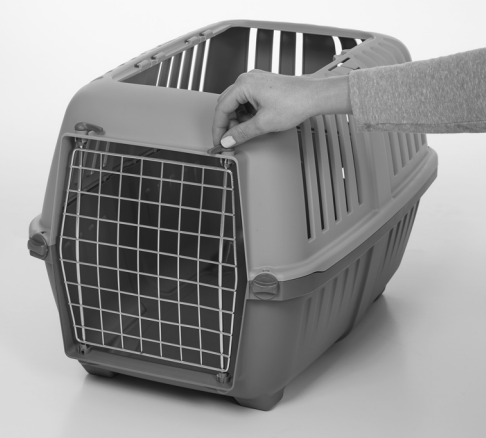
Closed



- With all four Front Door Hinges in the open position, insert the prongs of the Front Door into the bottom and top of the carrier opening.



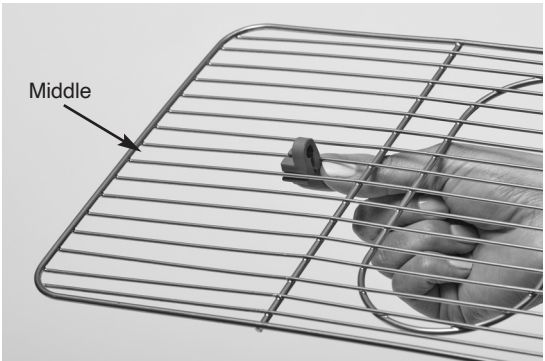
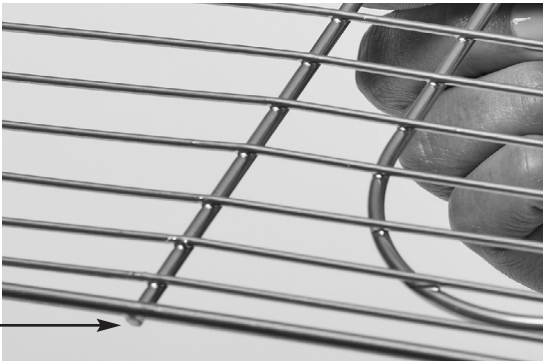
- Turn all four Front Door Hinges to the closed position to secure the door in place.
To open the door left to right: turn the left side hinges to the open position.
To open the door right to left: turn the right side hinges to the open position.
To remove the door completely: turn all four hinges to the open position and remove the door.



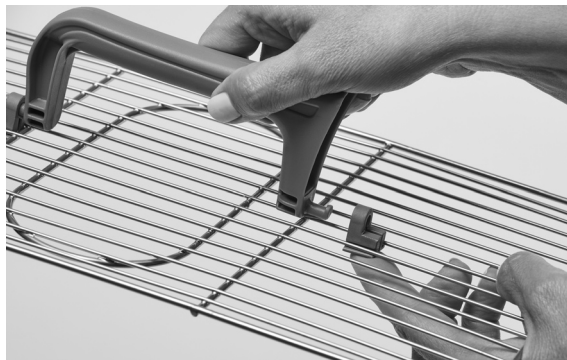
Closed and locked position.

- With the vertical wires on the Top Door facing down and underneath the horizontal wires of the door, insert the first Top Handle Clip up through the bottom and between the middle horizontal wires.

In this step, be sure the vertical wires on the Top Door are underneath the horizontal wires.



- Secure the peg on the Top Door Handle through the hole in the Top Door Handle Clip. Then, repeat Steps 9 and 10 with the second handle clip, pushing it up through the bottom and between the middle horizontal wires on the other end of the door, then inserting the second peg of the handle into this clip.



- Attach the Top Door to the top of the carrier. On one side of the carrier's top opening there are four fixed plastic hinges. With the curved end of the handle facing the front of the carrier, guide the side of the Top Door into the fixed plastic hinges, applying a small amount of pressure until the door snaps securely into the hinges.

