



Tower

Assembly Instructions for Model Number 138T-BK

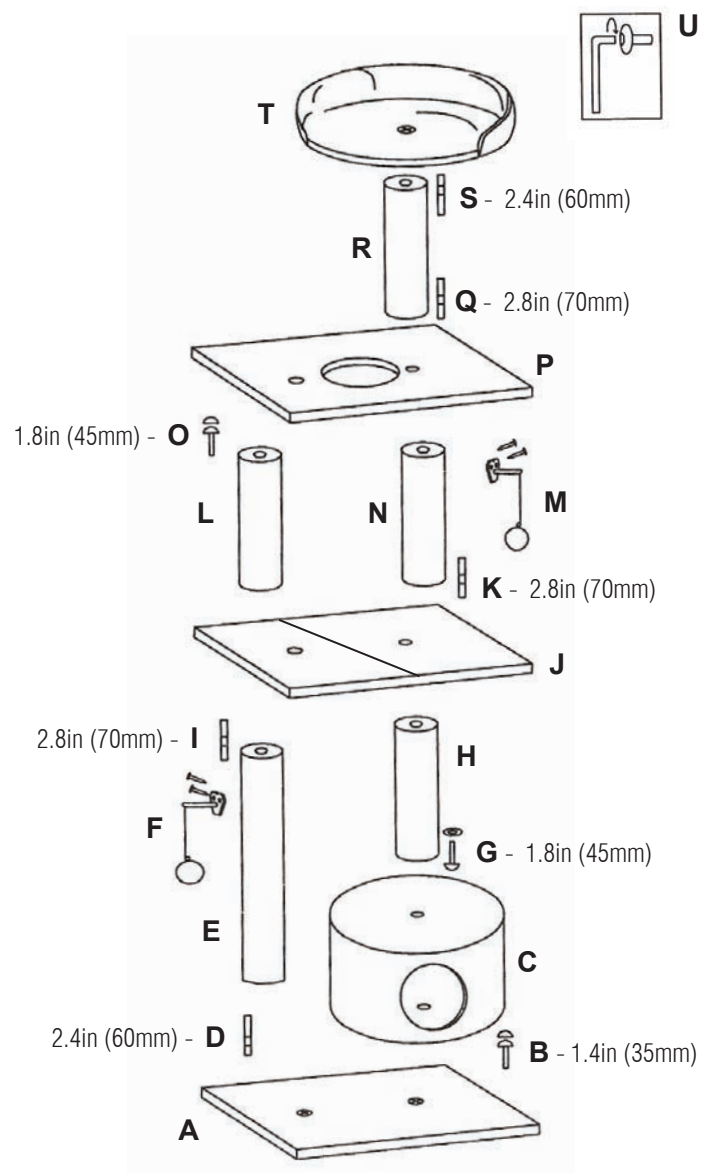
IMPORTANT INFORMATION

Unwrap and remove all parts from the box. Keep the box and packing material until the product is assembled. In case of return or exchange, failure to return product in similar condition as received could result in limited reimbursement. Please save sales receipt as proof of purchase for warranty purposes. Check to ensure you have all the parts below. If you discover any parts are missing, immediately call our toll-free service helpline at 1-800-428-8560 (Monday - Friday 9 a.m. to 4 p.m. EST) or at info@midwesthomes4pets.com.

PARTS IDENTIFICATION

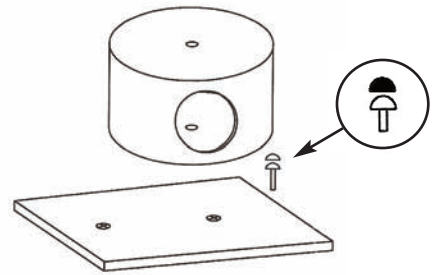
NOTE: Assembly will require a Flathead Screwdriver and Phillips Screwdriver.

- A - Bottom Platform
- B - Short Hardware Screw with Plastic Cap
- C - Circular Cubby
- D - Dual Thread Screw with Short & Long Threads
- E - Long Sisal-Wrapped Tube
- F - Puffball/Bell Attachments with 2 Screws
- G - Long Hardware Screw with Washer
- H - Sisal-Wrapped Tube
- I - Dual Thread Screw with Even Threads
- J - Middle Platform
- K - Dual Thread Screw with Even Threads
- L - Sisal-Wrapped Tube
- M - Puffball/Bell Attachments with 2 Screws
- N - Sisal-Wrapped Tube
- O - Long Hardware Screw with Plastic Cap
- P - Top Platform
- Q - Dual Thread Screw with Even Threads
- R - Sisal-Wrapped Tube
- S - Dual Thread Screw with Short & Long Threads
- T - Circular Bolstered Perch
- U - Allen Wrench

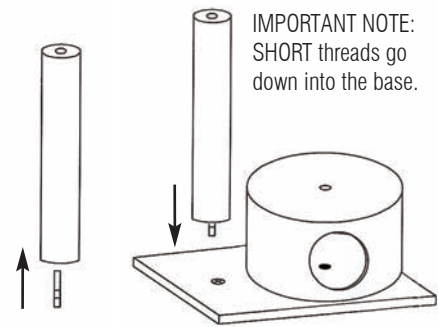


ASSEMBLY INSTRUCTIONS

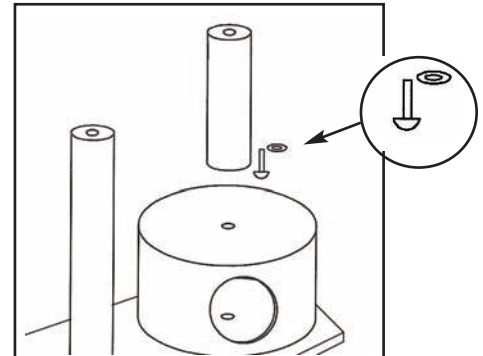
1. Attach the Circular Cubby (C) to the Bottom Platform (A) using the Short Hardware Screw with Plastic Cap (B). Use the Allen Wrench (U) to tighten. NOTE: Attach to the hole closest to the center of the Bottom Platform.



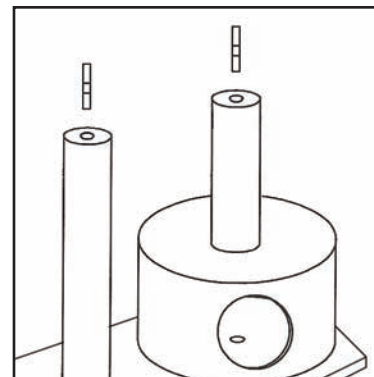
2. Insert the LONG threads of the Dual Threaded Screw (D) into the Long Sisal-Wrapped Tube (E). Use a Flathead Screwdriver to tighten. Then, screw the Long Sisal-Wrapped Tube into the Bottom Platform. NOTE: The SHORT threads go down into the Platform.



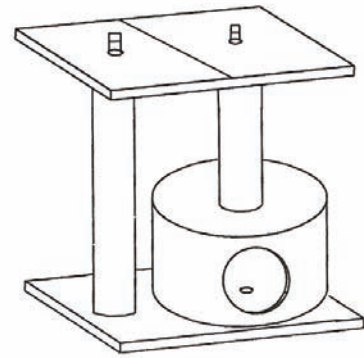
3. Attach the Sisal-Wrapped Tube (H) to the Circular Cubby using the Long Hardware Screw with Washer (G). The washer should be placed on the screw before inserting the screw up through the top of the Cubby. Use the Allen Wrench (U) to tighten.



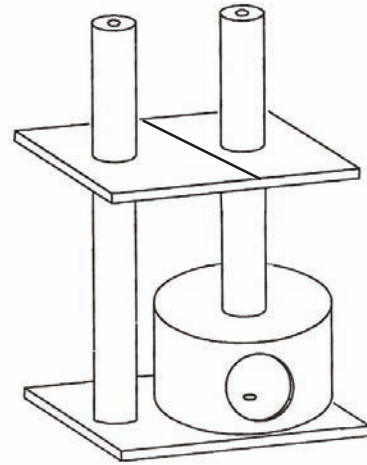
4. Insert the threads of the Dual Threaded Screws with Even Threads (I and K) into the Sisal-Wrapped Tubes (E and H) until the threads disappear. Do NOT tighten all the way.



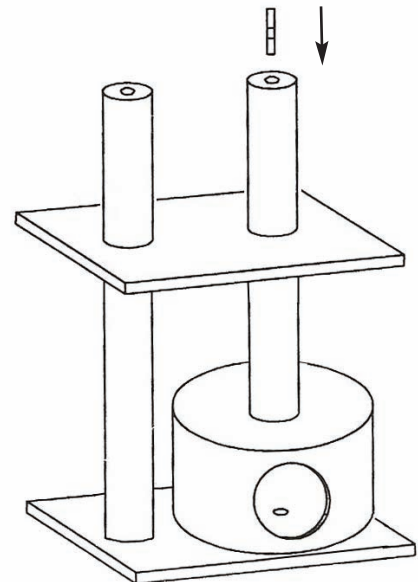
5. Place the Middle Platform (J) over the Dual-Threaded screws as illustrated. The middle and bottom platforms should be aligned.



6. Screw the two Sisal Wrapped Tubes (L and N) onto the Dual Threaded screws. You may need to loosen the screws so they catch the threading inside the Tubes. Turn the Tubes clockwise until they fully tighten.

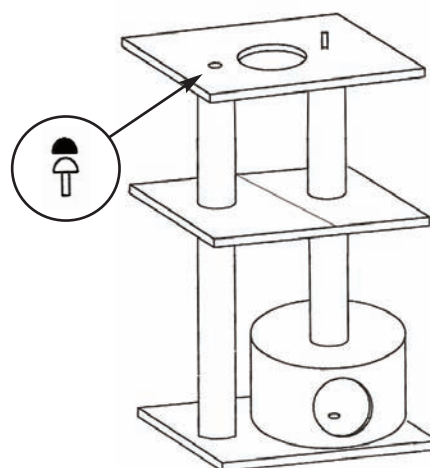


7. Insert the thread of the Dual Threaded Screw with Even Threads (Q) into the Sisal-Wrapped Tube on the right, as illustrated, until the lower threads disappear. Do NOT tighten.

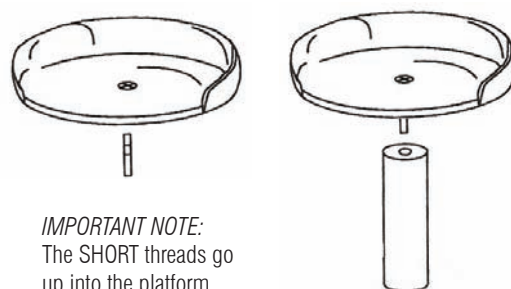


8. Place the Top Platform (P) over the Dual Threaded Screw so it rests on the two Sisal Wrapped Tubes below.

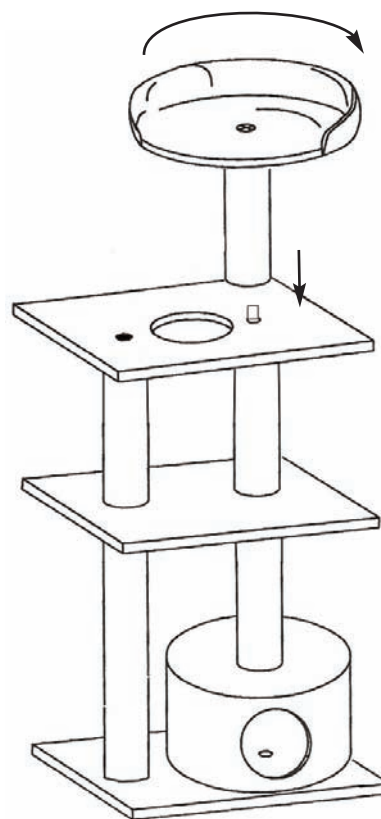
9. Use the Long Hardware Screw with Plastic Cap (O) to secure the left side of the Top Platform to the Sisal-Wrapped Tube. Use the Allen Wrench (U) to tighten.



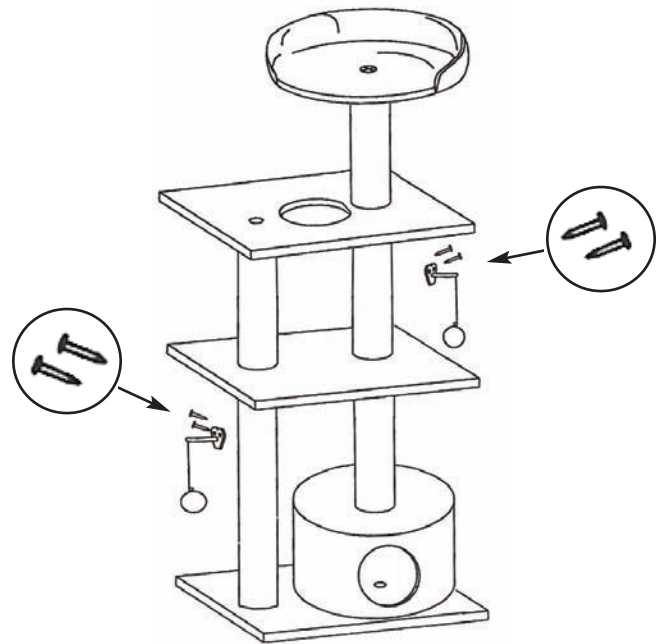
10. Insert the SHORT threads of the Dual Threaded Screw (S) into the bottom of the Circular Bolstered Perch (T). Then, screw the Sisal-Wrapped Tube (R) on to the Circular Bolstered Perch. The LONG threads will go down into the tube.



11. Attach the Tube with Perch onto the Dual Threaded Screw on the right of the Top Platform. Turn clockwise until fully tightened.



12. Using a Phillips Screwdriver attach the Puffball/Bell Attachments to the Sisal-Wrapped Tubes as shown.



TOLL-FREE SERVICE HELPLINE: If you have any problems or questions with the assembly of your new Feline Nuvo Cat Furniture: Tower, call our Service Helpline at: 1-800-428-8560 between 9:00 a.m. and 4:00 p.m. (EST) Monday through Friday.

LIMITED MANUFACTURERS WARRANTY

1. For one (1) year from the date of original purchase, MIDWEST Homes For Pets ("MIDWEST") warrants to the purchaser of this pet furniture that, should it prove defective by reason of improper workmanship and/or material, MIDWEST will repair or replace, at its option, any defective part of the pet furniture, without charge for the part or for shipping. Replacement parts are warranted for the remainder of the original period.
2. **THIS WARRANTY DOES NOT COVER** defects in the furniture caused by any animal, any physical abuse to or misuse of the pet furniture, any damage caused by the original purchaser or any third party, or any defects arising or discovered more than one (1) year from the original retail purchase date.
3. **STEPS TO OBTAIN WARRANTY SERVICE:**
 - A. The purchaser must call MIDWEST's HELPLINE, 800-428-8560, to report the alleged defect to a customer service representative or obtain missing parts.
 - B. The customer service representative will determine if the defect is covered by this warranty, and if it is, will authorize and instruct the purchaser in how to obtain corrective action.
 - C. MIDWEST may require the purchaser to present the sales receipt or other proof of purchase prior to authorizing any return or replacement. No returns or replacements will be permitted without proper authorization. If a return or replacement is authorized, you may be requested to return the item to MIDWEST or to make the item available for pick-up by MIDWEST.
4. **ANY EXPRESS WARRANTY NOT PROVIDED IN THIS WARRANTY DOCUMENT, AND ANY REMEDY FOR BREACH OF CONTRACT THAT, BUT FOR THIS PROVISION, MIGHT ARISE BY IMPLICATION OR OPERATION OF LAW, IS HEREBY EXCLUDED AND DISCLAIMED. THE IMPLIED WARRANTIES OF MERCHANTABILITY AND OF FITNESS FOR ANY PARTICULAR PURPOSE ARE EXPRESSLY LIMITED TO A TERM OF ONE (1) YEAR. SOME STATES DO NOT ALLOW LIMITATIONS ON HOW LONG AN IMPLIED WARRANTY LASTS, SO THE ABOVE LIMITATIONS MAY NOT APPLY TO YOU.**
5. **UNDER NO CIRCUMSTANCES SHALL MIDWEST BE LIABLE TO PURCHASER OR ANY OTHER PERSON OR ANY SPECIAL, INCIDENTAL OR CONSEQUENTIAL DAMAGES, WHETHER ARISING OUT OF BREACH OF WARRANTY, BREACH OF CONTRACT OR OTHERWISE, SOME STATES DO NOT ALLOW THE EXCLUSION OR LIMITATIONS OF INCIDENTAL OR CONSEQUENTIAL DAMAGES, SO THE ABOVE LIMITATIONS OR EXCLUSION MAY NOT APPLY TO YOU.**
6. This warranty gives you specific legal rights, and you may also have other rights which vary from state to state.

800-428-8560
 midwesthomes4pets.com
 P.O. Box 1031
 Muncie, Indiana 47308



Feline Nuvo138T-BK-INST (1111)

