

Homes For Pets

PORTABLE TENT CRATES

Canine CAMPER[™]

2 DOOR

1712 CC2, 1718 CC2, 1724 CC2, 1730 CC2,
1736 CC2, 1742 CC2, 1748 CC2



Easy to Set-Up POP-UP & ZIP Assembly
No Poles, Bars, Straps or Tools Required
Allows for Complete Assembly in Seconds!



Front & Side Zippered Mesh Doors

Water-Resistant Material

Reinforced Flat-Top Surface Storage Design

For Placement of Pet Accessories



Non-Skid Feet

Privacy Flaps

To Regulate Visibility & Ventilation

Bucket Loop

Holds Water Bucket in Place



Storage Pockets
Side & Back

Synthetic Sheepskin Pad

Ground Stakes



Front & Side Zippered Mesh Doors



Includes Carrying Tote



Outdoor & Indoor





All constructed from: (600 Denier) Woven Water-Resistant **Hunter Green** Color Polyester with Tan PVC Backing. Black PVC Mesh Window Screens.

Varnished Wood Floor with Removable Double-Sided, Ultra Soft Synthetic Sheepskin (Machine Washable) Zippered Cover.

PORTABLE TENT CRATES

**1712 CC2, 1718 CC2, 1724 CC2, 1730 CC2,
1736 CC2, 1742 CC2, 1748 CC2 Hunter Green**



1712 CC2

Size: 12 L x 10 W x 10 H"
30 L x 25 W x 25 H cm
Weight: 3 lbs (4 w/ctn)
1.4 kg (1.8 w/ctn)



1718 CC2

Size: 18 L x 15 W x 16 H"
46 L x 38 W x 41 H cm
Weight: 6 lbs (7 w/ctn)
2.7 kg (3.2 w/ctn)



1724 CC2

Size: 25 L x 18 W x 21 H"
64 L x 46 W x 53 H cm
Weight: 11 lbs (12 w/ctn)
5 kg (5.4 w/ctn)

* Accessories: 6PAN, all 24"/
61 cm QuietTime™ Beds



1730 CC2

Size: 31 L x 22 W x 24 H"
79 L x 56 W x 61 H cm
Weight: 14 lbs (16 w/ctn)
6.4 kg (7.3 w/ctn)

* Accessories: 7PAN, all 24"/
76cm QuietTime™ Beds



1736 CC2

Size: 37 L x 25 W x 28 H"
94 L x 64 W x 71 H cm
Weight: 18 lbs (21 w/ctn)
8.2 kg (9.5 w/ctn)

* Accessories: 8PAN, all 36"/
91 cm QuietTime™ Beds



1742 CC2

Size: 43 L x 28 W x 32 H"
109 L x 71 W x 81 H cm
Weight: 23 lbs (27 w/ctn)
10.4 kg (12.3 w/ctn)

* Accessories: 9PAN, all 42"/
107 cm QuietTime™ Beds



1748 CC2

Size: 48 L x 31 W x 35 H"
122 L x 79 W x 89 H cm
Weight: 28 lbs (31 w/ctn)
12.7 kg (14.1 w/ctn)

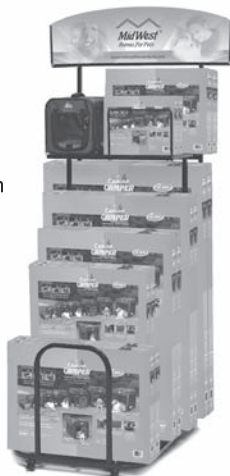
* Accessories: 10PAN, all 48"/
122 cm QuietTime™ Beds



Roller POP Display 545

Length: 35 3/4" 93.4 cm
Width: Display 25 1/2" 64.8 cm
w/Header Sign 36 3/8" 92.4 cm
Height (overall with header):
w/Shelf 78 3/4" 200 cm
w/o Shelf 61" 155 cm
Weight: 50 lbs 22.7 kg

Cartons displayed vertically -
width: 63 5/8" 161.6 cm
Cartons displayed horizontally -
width: 42 5/8" 108.3 cm



* For a Complete Listing of Accessories

**Pet Beds • Crate Casters
Feed Bowls • Nameplate Kits . . .**

- Come Visit Our Website @
www.midwesthomes4pets.com



www.midwesthomes4pets.com

P.O. Box 1031 Muncie, IN 47308 USA Made in China
800 428 8560 PART# 5028 (103)

MidWest®
Homes For Pets